



FortiGate 100D Series

FortiGate 100D, 140D, 140D-POE and 140D-POE-T1

In order to comply with legislation and secure the valuable data traversing networks, small and medium enterprises and remote branch offices need a security solution that integrates multiple attack recognition technologies into a single device. With limited budgets and modest remote resources, these smaller networks desire a cost effective solution that is simple to install, connect and maintain. Just as importantly, networks are ever-expanding and need a solution that leaves them with room to grow over time.

The FortiGate 100D series is an ideal security solution for small and medium enterprises or remote branch offices of larger networks. It combines firewall, IPsec and SS-VPN, application control, intrusion prevention, anti-malware, antispam, P2P security, and web filtering into a single device.

Simple, Powerful, Secure

The FortiGate 100D series installs in minutes, automatically downloading regular updates to protect against the latest viruses, network vulnerabilities, worms, spam and phishing attacks, and malicious websites with no administrator intervention. Leveraging patented FortiASIC acceleration, the FortiGate 100D series offers market-leading performance, with high port density that facilitate network growth and expansion. Onboard storage provides local archiving of data for policy compliance and/or WAN Optimization. The WAN Optimization functionality increases network performance by reducing the amount of communication and data transmitted between applications and servers across a WAN, and/or web caching.

Highlights

Firewall Performance	IPS Performance	Interfaces
2.5 Gbps	950 Mbps	Multiple GE SFP and GE RJ45

FortiGate® 100D Series
 Integrated Security for
 Small and Medium Enterprises



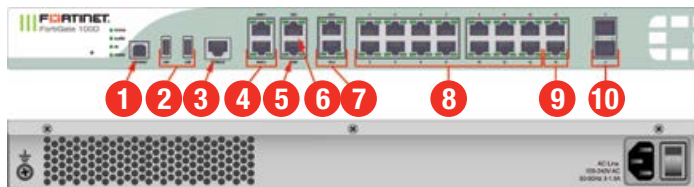
Features & Benefits

- 5 times faster hardware accelerated next generation firewall offers best-in-class price/performance ratio
- Integrated high port density delivers maximum flexibility and scalability
- NSS Labs Recommended NGFW and NGIPS with consolidated security delivers top-rated protection
- Application control plus identity and device-based policy enforcement provides more granular protection
- Intuitive management interface enables broad and deep visibility that scales from a single FortiGate to thousands



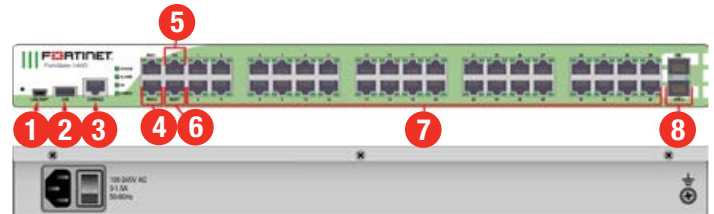
HARDWARE

FortiGate 100D



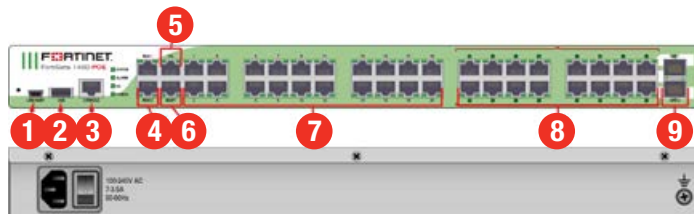
- | | |
|-------------------------------|-----------------------------|
| 1. USB Management Port | 6. 1x GE RJ45 DMZ Port |
| 2. 2x USB Ports | 7. 2x GE RJ45 HA Ports |
| 3. Console Port | 8. 14x GE RJ45 Switch Ports |
| 4. 2x GE RJ45 WAN Ports | 9. 2x GE RJ45 Shared Ports |
| 5. 1x GE RJ45 Management Port | 10. 2x GE SFP Shared Ports |

FortiGate 140D



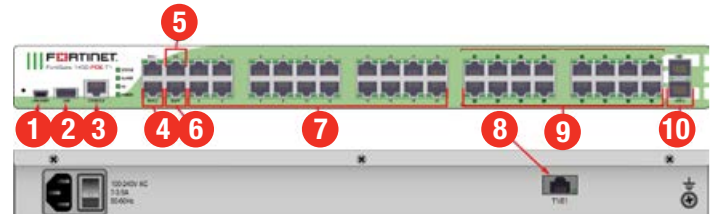
- | | |
|------------------------|-------------------------------|
| 1. USB Management Port | 5. 1x GE RJ45 HA Port |
| 2. USB Port | 6. 1x GE RJ45 Management Port |
| 3. Console Port | 7. 36x GE RJ45 Switch Ports |
| 4. x GE RJ45 WAN Ports | 8. 2x GE SFP DMZ Ports |

FortiGate 140D-POE



- | | |
|-------------------------|-------------------------------|
| 1. USB Management Port | 6. 1x GE RJ45 Management Port |
| 2. USB Port | 7. 20x GE RJ45 Switch Ports |
| 3. Console Port | 8. 16x GE RJ45 PoE Ports |
| 4. 2x GE RJ45 WAN Ports | 9. 2x GE SFP DMZ Ports |
| 5. 1x GE RJ45 HA Port | |

FortiGate 140D-POE-T1



- | | |
|-------------------------|-------------------------------|
| 1. USB Management Port | 6. 1x GE RJ45 Management Port |
| 2. USB Port | 7. 20x GE RJ45 Switch Ports |
| 3. Console Port | 8. 1x T1 Port |
| 4. 2x GE RJ45 WAN Ports | 9. 16x GE RJ45 PoE Ports |
| 5. 1x GE RJ45 HA Port | 10. 2x GE SFP DMZ Ports |



Powered by FortiASIC CP8

- Providing high-speed cryptography for encryption and decryption
- Accelerates signature-based content inspection services such as AV and IPS

Content Processor

The FortiASIC CP8 content processor works outside of the direct flow of traffic, off-loading critical CPU resources.

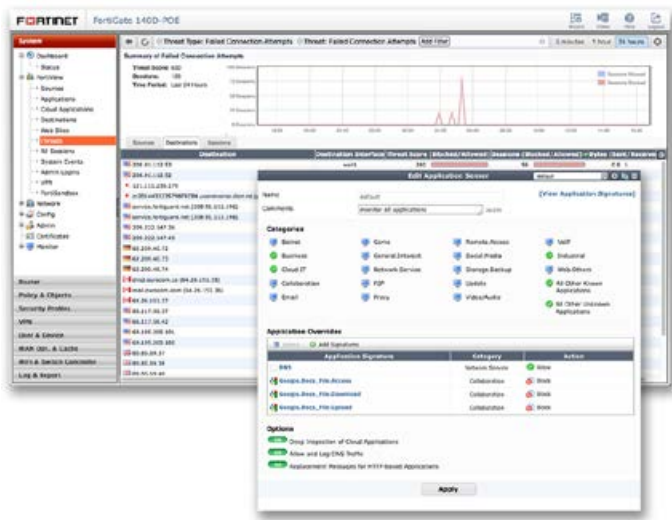
Install in Minutes with FortiExplorer

The FortiExplorer™ wizard enables you to easily and quickly set up and configure FortiGate platforms with easy-to-follow instructions. The application runs on Windows, Mac OS X desktops and laptops as well as popular mobile devices. Simply connect to the appropriate USB port on the appliance, and be fully protected in minutes.

Power up with PoE Interfaces

The FortiGate 140D-POE and FortiGate 140D-POE-T1 include PoE interfaces that allow you to plug in compatible wireless access points and IP phones out of the box, providing ease of deployment and lower TCO.

SOFTWARE



FortiOS Management UI — FortiView and Application Control Panel

FortiOS

FortiOS helps you protect your organization against advanced threats, configure and deploy your network security faster and see deep into what's happening inside your network. It enables organization to set up policies specific to types of devices, users and applications with industry-leading security capabilities. FortiOS leverages custom FortiASICs and the Optimum Path Processing architecture of FortiGate to deliver 5 times faster throughput performance. In essence, FortiOS delivers:

- **Comprehensive Security** — Control thousands of applications and stop more threats with NSS Labs Recommended IPS, sandboxing, VB100 certified antimalware and more.
- **Superior Control and Visibility** — Stay in control with rich visibility over network traffic, granular policy control, and intuitive, scalable security and network management.
- **Robust Networking Capabilities** — Optimize your network with extensive switching and routing, high availability, WAN optimization, embedded WiFi controller, and a range of virtual options.



For more information, please refer to the FortiOS data sheet available at www.fortinet.com

SERVICES

FortiGuard™ Security Services

FortiGuard Labs offers real-time intelligence on the threat landscape, delivering comprehensive security updates across the full range of Fortinet's solutions. Comprised of security threat researchers, engineers, and forensic specialists, the team collaborates with the world's leading threat monitoring organizations, other network and security vendors, as well as law enforcement agencies:

- **Real-time Updates** — 24x7x365 Global Operations research security intelligence, distributed via Fortinet Distributed Network to all Fortinet platforms.
- **Security Research** — FortiGuard Labs have discovered over 170 unique zero-day vulnerabilities to date, totaling millions of automated signature updates monthly.
- **Validated Security Intelligence** — Based on FortiGuard intelligence, Fortinet's network security platform is tested and validated by the world's leading third-party testing labs and customers globally.



For more information, please refer to <http://forti.net/guard>

FortiCare™ Support Services

Our FortiCare customer support team provides global technical support for all Fortinet products. With support staff in the Americas, Europe, Middle East and Asia, FortiCare offers services to meet the needs of enterprises of all sizes:

- **Enhanced Support** — For customers who need support during local business hours only.
- **Comprehensive Support** — For customers who need around-the-clock mission critical support, including advanced exchange hardware replacement.
- **Premium Services** — For global or regional customers who need an assigned Technical Account Manager, enhanced service level agreements, extended software support, priority escalation, on-site visits and more.
- **Professional Services** — For customers with more complex security implementations that require architecture and design services, implementation and deployment services, operational services and more.



For more information, please refer to <http://forti.net/care>

SPECIFICATIONS

	FORTIGATE 100D	FORTIGATE 140D	FORTIGATE 140D-POE	FORTIGATE 140D-POE-T1
Hardware Specifications				
GE RJ45 Ports	20	40	24	24
GE RJ45 PoE Ports	–	–	16	16
GE SFP or RJ45 Shared Ports	2	–	–	–
GE SFP Ports	–	2	2	2
USB Ports (Client / Server)	1 / 2	1 / 1	1 / 1	1 / 1
T1 Port	–	–	–	1
Console Port	1	1	1	1
Internal Storage	32 GB	32 GB	32 GB	32 GB
Included Transceivers	NA	0	0	0
System Performance				
Firewall Throughput			2.5 Gbps	
Firewall Latency (64 byte UDP packets)	37 µs	46 µs	46 µs	46 µs
Firewall Throughput (Packets Per Second)			300 Kpps	
Concurrent Sessions (TCP)			3 Million	
New Sessions/Second (TCP)			22,000	
Firewall Policies			10,000	
IPsec VPN Throughput (512 byte packets)			450 Mbps	
Gateway-to-Gateway IPsec VPN Tunnels			2,000	
Client-to-Gateway IPsec VPN Tunnels			5,000	
SSL-VPN Throughput			300 Mbps	
Concurrent SSL-VPN Users (Recommended Maximum)			300	
IPS Throughput			950 Mbps	
Antivirus Throughput			300 Mbps	
CAPWAP Clear-text Throughput (HTTP)			1.50 Gbps	
Virtual Domains (Default / Maximum)			10 / 10	
Maximum Number of FortiAPs (Total / Tunnel Mode)			64 / 32	
Maximum Number of FortiTokens			1,000	
Maximum Number of Registered FortiClients			600	
High Availability Configurations			Active / Active, Active / Passive, Clustering	
Dimensions				
Height x Width x Length (inches)	1.75 x 17.01 x 11.73	1.75 x 17.01 x 12.28	1.75 x 17.01 x 12.28	1.75 x 17.01 x 12.28
Height x Width x Length (mm)	44 x 432 x 298	44 x 432 x 312	44 x 432 x 312	44 x 432 x 312
Form Factor	Rack Mount, 1 RU	Rack Mount, 1 RU	Rack Mount, 1 RU	Rack Mount, 1 RU
Weight	9.5 lbs (4.3 kg)	11.5 lbs (5.2 kg)	11.5 lbs (5.2 kg)	11.5 lbs (5.2 kg)
Environment				
Power Required			100–240V AC, 50–60 Hz	
Maximum Current	110 V / 3 A, 220 V / 1.5 A	110 V / 2 A, 220 V / 1 A	110 V / 4 A, 220 V / 2 A	110 V / 4 A, 220 V / 2 A
Total Available PoE Power Budget*	–	–	270 W	270 W
Power Consumption (Average / Maximum)	52.6 W / 63.1 W	44.8 W / 58.7 W	193.4 W / 337.1 W	193.4 W / 337.1 W
Heat Dissipation	215.3 BTU/h	200.3 BTU/h	1150.2 BTU/h	1150.2 BTU/h
Operating / Storage Temperature			32–104°F (0–40°C) / -31–158°F (-35–70°C)	
Operating Altitude			Up to 7,400 ft (2,250 m)	
Humidity			10–90% non-condensing	
Compliance				
			FCC Part 15 Class A, C-Tick, VCCI, CE, UL/cUL, CB	
Certifications				
			ICSA Labs: Firewall, IPsec, IPS, Antivirus, SSL-VPN	

Note: All performance values are "up to" and vary depending on system configuration. Antivirus performance is measured using 44 Kbyte HTTP files. IPS performance is measured using 1 Mbyte HTTP files. IPsec VPN performance is based on 512 byte UDP packets using AES-256+SHA1. Firewall Throughput performance is measured using UDP 1518 Bytes based on RFC 2544. Antivirus Throughput is measured in proxy mode. For complete, up-to-date and detailed feature set, please refer to the Administration Handbook and FortiOS Datasheet.

* Maximum loading on each PoE port is 15.4 W (802.3af).

ORDER INFORMATION

Product	SKU	Description
FortiGate 100D	FG-100D	20x GE RJ45 ports (including 1x DMZ port, 1x Mgmt port, 2x HA ports, 16x internal switch ports), 2x shared media pairs (including 2x GE RJ45, 2x GE SFP slots), 32 GB onboard storage. Maximum managed FortiAPs (Total / Tunnel) 64 / 32.
FortiGate 140D	FG-140D	40x GE RJ45 (including 36x switch ports, 2x Mgmt/HA ports, 2x WAN ports), 2x GE SFP DMZ slots, 32 GB onboard storage. Maximum managed FortiAPs (Total / Tunnel) 64 / 32.
FortiGate 140D-POE	FG-140D-POE	40x GE RJ45 (including 16x PoE ports, 20x switch ports, 2x Mgmt/HA ports, 2x WAN ports), 2x GE SFP DMZ slots, 32 GB onboard storage. Maximum managed FortiAPs (Total / Tunnel) 64 / 32.
FortiGate 140D-POE-T1	FG-140D-POE-T1	40x GE RJ45 (including 16x PoE ports, 20x switch ports, 2x Mgmt/HA ports, 2x WAN ports), 2x GE SFP DMZ slots, 1x T1 port, 32 GB onboard storage (US Only). Maximum managed FortiAPs (Total / Tunnel) 64 / 32.



GLOBAL HEADQUARTERS
Fortinet Inc.
899 Kifer Road
Sunnyvale, CA 94086
United States
Tel: +1.408.235.7700
www.fortinet.com/sales

EMEA SALES OFFICE
120 rue Albert Caquot
06560, Sophia Antipolis,
France
Tel: +33.4.8987.0510

APAC SALES OFFICE
300 Beach Road 20-01
The Concourse
Singapore 199555
Tel: +65.6513.3730

LATIN AMERICA SALES OFFICE
Prol. Paseo de la Reforma 115 Int. 702
Col. Lomas de Santa Fe,
C.P. 01219
Del. Alvaro Obregón
México D.F.
Tel: 011-52-(55) 5524-8480